



# Marina Residency

Designed For Distinguished Living





# Full Floor Planning

(1<sup>st</sup> to 18<sup>th</sup> Floor)



# 4 BED + LOUNGE

(One Car Parking with each Apartment)

**Location:** Beaumont Road Facing, (Unit No. 2 & 4), Price: 515,00,000/-

**Location:** Beaumont Road Facing + Corner, (Unit No. 1), Price: 525,00,000/-

**Location:** Two Side Corner (Both Roads Facing), (Unit No. 5), Price: 550,00,000/-

*Pre-Launching Special Discount available on regular and timely payments.*



## Area Breakdown

- Net Area: 1,362 sq.ft
- Serv. /Cir. /Parking Area: 477 sq.ft

**Saleable Gross Area: 1,839 sq.ft**

## Complimentary Areas

- Club Area: 68 sq.ft (Free)

## Final Gross Area

- Final Gross Area: 1,907 sq.ft

Note: Total Estimated File Price is excluded from Stamp Duty, Advance Tax, E7 Tax, Any Tax (Required for Sub-Lease), Capital Value Tax, Capital Gain Tax, Registrar Fees, Lawyer Fees, Documentation Fees, Misc, Property Tax, Excise & Taxation, and All Utility Connections 1. Electric (Approval / Connection / Meter /P.M.T / Sub-Station / Grid Station / High & Low Tension Cables / Misc / All Material / Billing) Charges, 2. Gas (Connection / Meter / Main Line / Approval / Misc / All Material / Billing) Charges. 3. Water & Sewerage (Connection / Approval / Meter / Misc / All Material / R.O. Plant / Billing) are extra amount whatsoever decided by Company on later stages to be paid by the File Holder upon demand.

# 4 BED + LOUNGE (XL)

(One Car Parking with each Apartment)

**Location:** Beaumont Road Facing, (Unit No. 3), Price: 525,00,000/-

*Pre-Launching Special Discount available on regular and timely payments.*



## Area Breakdown

- Net Area: 1,367 sq.ft
- Serv. /Cir. /Parking Area: 478 sq.ft

**Saleable Gross Area: 1,845 sq.ft**

## Complimentary Areas

- Club Area: 68 sq.ft (Free)

## Final Gross Area

- Final Gross Area: 1,913 sq.ft

Note: Total Estimated File Price is excluded from Stamp Duty, Advance Tax, E7 Tax, Any Tax (Required for Sub-Lease), Capital Value Tax, Capital Gain Tax, Registrar Fees, Lawyer Fees, Documentation Fees, Misc, Property Tax, Excise & Taxation, and All Utility Connections 1. Electric (Approval / Connection / Meter /P.M.T / Sub-Station / Grid Station / High & Low Tension Cables / Misc / All Material / Billing) Charges, 2. Gas (Connection / Meter / Main Line / Approval / Misc / All Material / Billing) Charges. 3. Water & Sewerage (Connection / Approval / Meter / Misc / All Material / R.O. Plant / Billing) are extra amount whatsoever decided by Company on later stages to be paid by the File Holder upon demand.

# **3 BED + LOUNGE**

(One Car Parking with each Apartment)

**Location: Waterfall/Landscape, (Unit No. 11), Price: 320,00,000/-**

**Location: Waterfall/Landscape, (Unit No. 12), Price: 320,00,000/-**

**Location: Plot Facing, (Unit No. 9,10), Price: 335,00,000/-**

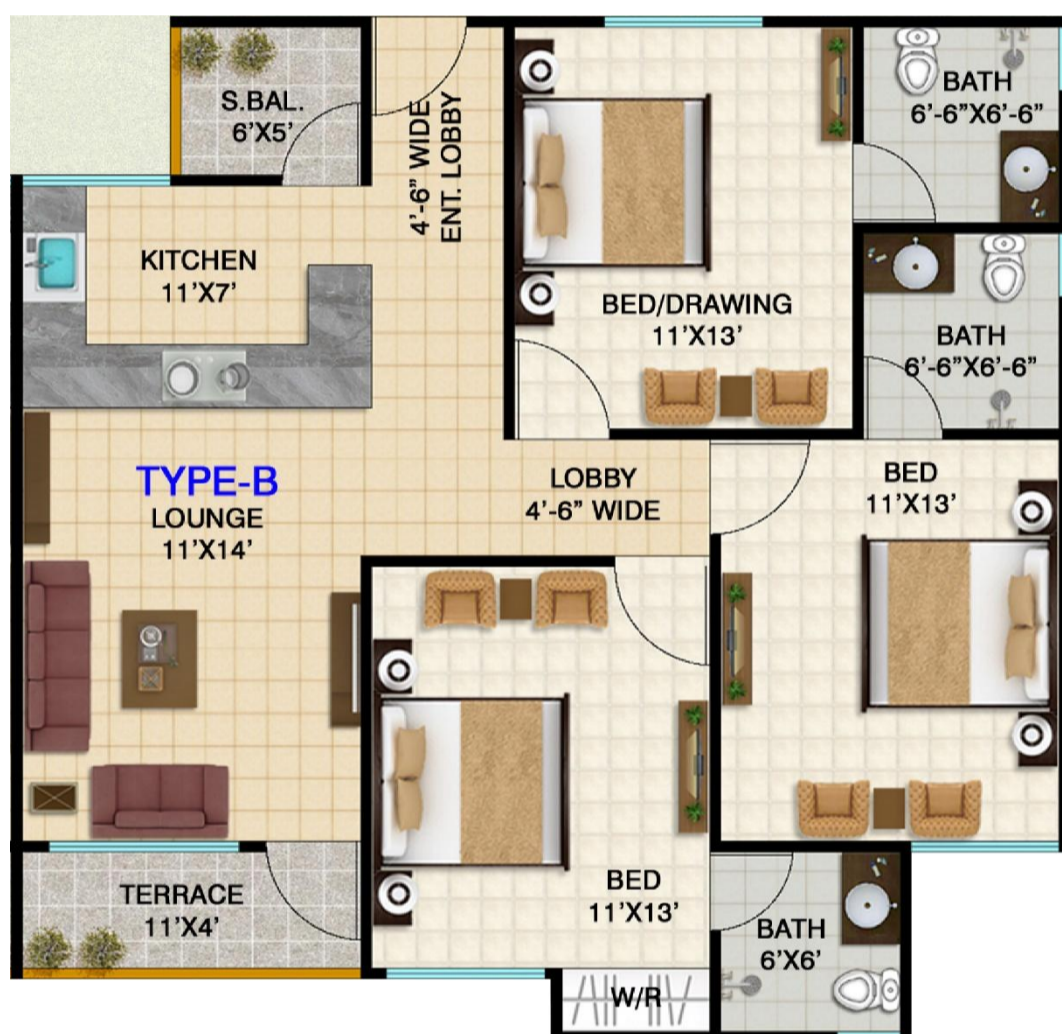
**Location: Plot Facing, (Unit No. 14,15), Price: 340,00,000/-**

**Location: Plot Facing + Corner, (Unit No. 13), Price: 345,00,000/-**

**Location: 40 FT Road Facing, (Unit No. 6 & 7), Price: 385,00,000/-**

**Location: 40 FT Road Facing + Plot Corner, (Unit No. 8), Price: 385,00,000/-**

*Pre-Launching Special Discount available on regular and timely payments.*



## **Area Breakdown**

- Net Area: 988 sq.ft
- Serv. /Cir. /Parking Area: 346 sq.ft

**Saleable Gross Area: 1,334 sq.ft**

## **Complimentary Areas**

- Club Area: 49 sq.ft (Free)

## **Final Gross Area**

- Final Gross Area: 1,389 sq.ft

Note: Total Estimated File Price is excluded from Stamp Duty, Advance Tax, E7 Tax, Any Tax (Required for Sub-Lease), Capital Value Tax, Capital Gain Tax, Registrar Fees, Lawyer Fees, Documentation Fees, Misc, Property Tax, Excise & Taxation, and All Utility Connections 1. Electric (Approval / Connection / Meter /P.M.T / Sub-Station / Grid Station / High & Low Tension Cables / Misc / All Material / Billing) Charges, 2. Gas (Connection / Meter / Main Line / Approval / Misc / All Material / Billing) Charges. 3. Water & Sewerage (Connection / Approval / Meter / Misc / All Material / R.O. Plant / Billing) are extra amount whatsoever decided by Company on later stages to be paid by the File Holder upon demand.

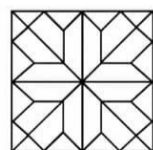
# PAYMENT SCHEDULE & DISCOUNTS

<i>PAYMENT SCHEDULE</i>	<u>Amount in Percent</u>
On Booking – 1 <sup>st</sup> Month	5 %
2 <sup>nd</sup> Month	5 %
10 Installments of 2.5% starting from 3 <sup>rd</sup> to 12 <sup>th</sup> months	25 %
1% per month approx. 42 equal monthly onwards installments from 6 <sup>th</sup> Month	1% per month upto 42 months
<b>TWO MONTH BEFORE WORK COMPLETE</b>	<b>BALANCE</b>

## ***EXAMPLE HOW TO AVAIL PRE LAUNCHING DISCOUNT***

View/Download “e-Broucher / 3D Animation / Price List & Discounts”

<https://www.marinagroup.pk/mr>



**ARCH VISION PLUS**  
ARCHITECTS, ENGINEERS & TOWN PLANNERS



**ARIF & ASSOCIATES**  
CONSULTANTS

**LAST UPDATED ON: Tuesday, April 21, 2026**

Disclaimer: All Picture, Plans, Layouts, Information, Data and Details included in this brochure are indicative only and may change at any time up to the final “as built” status in accordance with the final designs of the project and regulatory approvals and planning permission.