

# MARINA EXECUTIVE TOWER

Empowering Dreams, Achieving Success

“MUHAMMAD ALI SOCIETY”





# PROJECT FEATURES

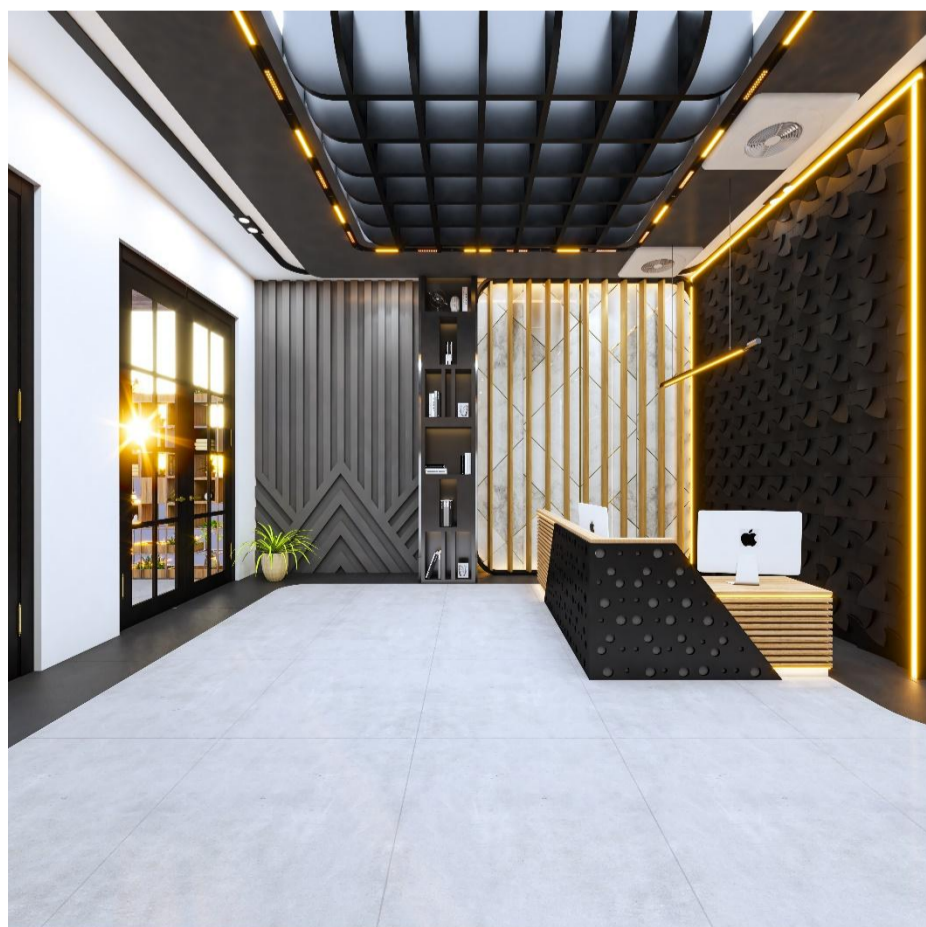
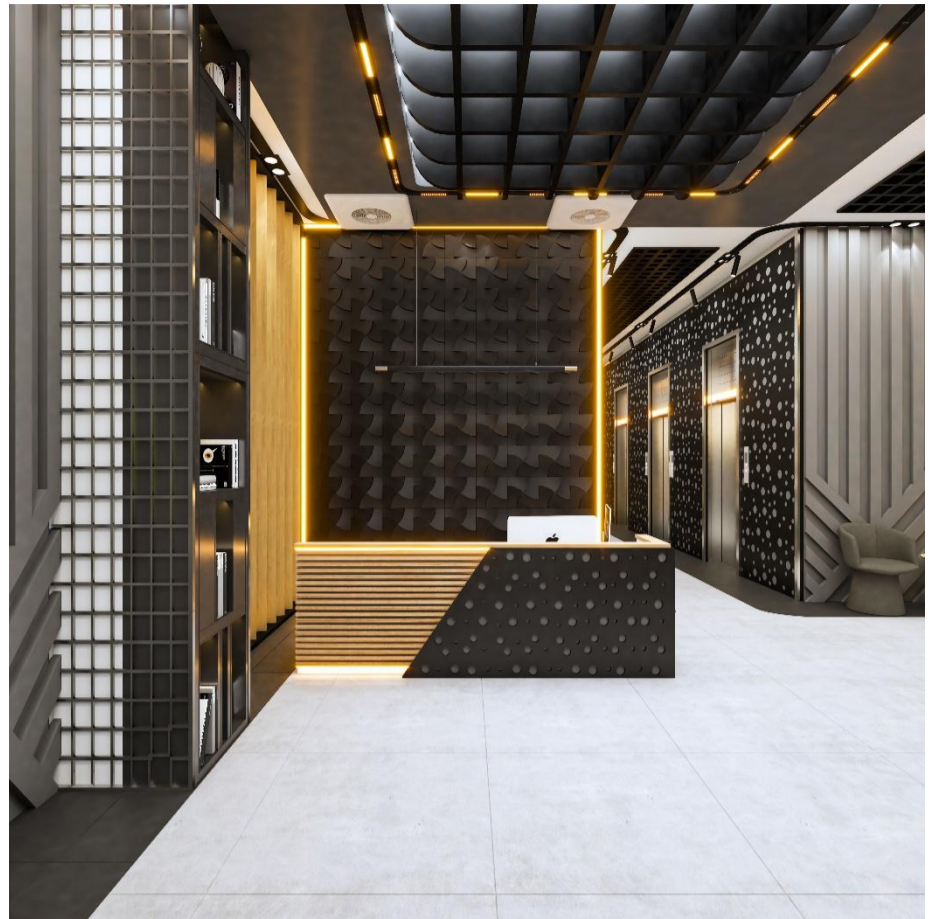
## *OFFICES AND SHOWROOMS*

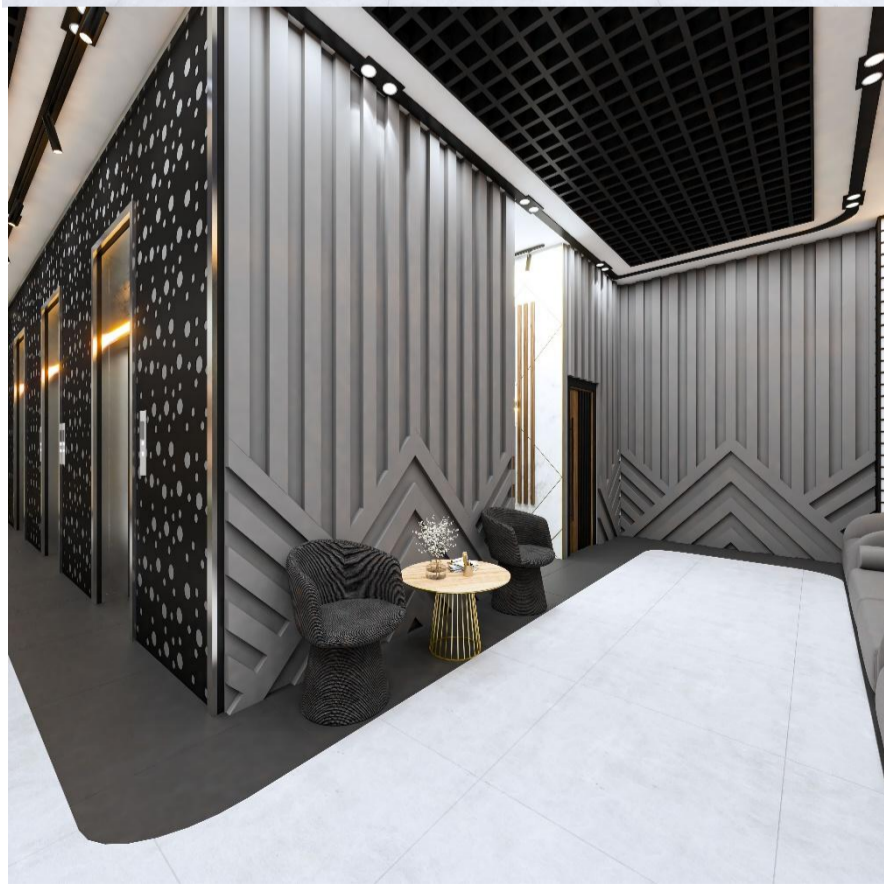
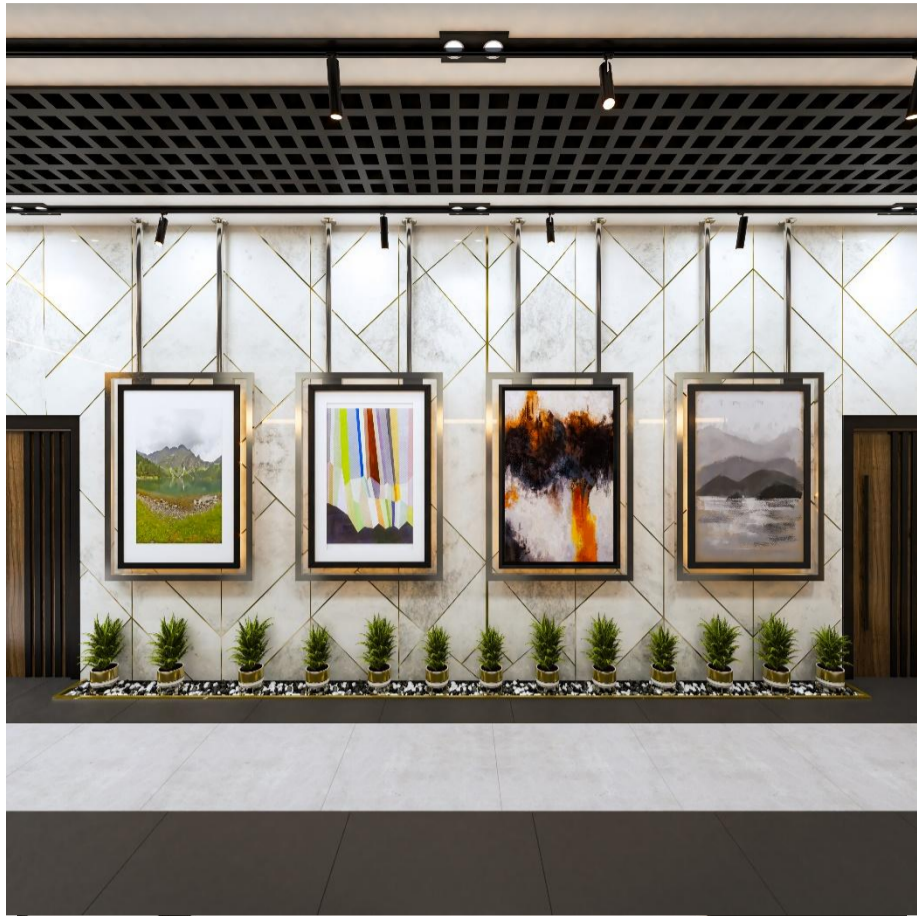
- 2 basements for indoor car parking available for offices within the building.
- Backup generator (**with AC BACKUP**) and 24-hour CCTV surveillance.
- Modern offices equipped with the latest materials.
- 3 high-speed lifts for convenient access.
- Reception area, office corridors lobby featuring highly interior design.
- Offices with a gross area of 1500+ sqft are eligible for an additional free washroom if needed.
- Firefighting systems have been installed, including fire alarms in all corridors covering nearly every office, along with smoke detectors, fire hose reels, and extinguishers. Additionally, a water sprinkler point has been provisioned in each office for fire suppression. Please note that one sprinkler point has been provided in your office, and you may extend it further as needed, based on the internal layout.
- One normal staircase and 2 emergency stair cases.

## AMENITIES (Recreation)

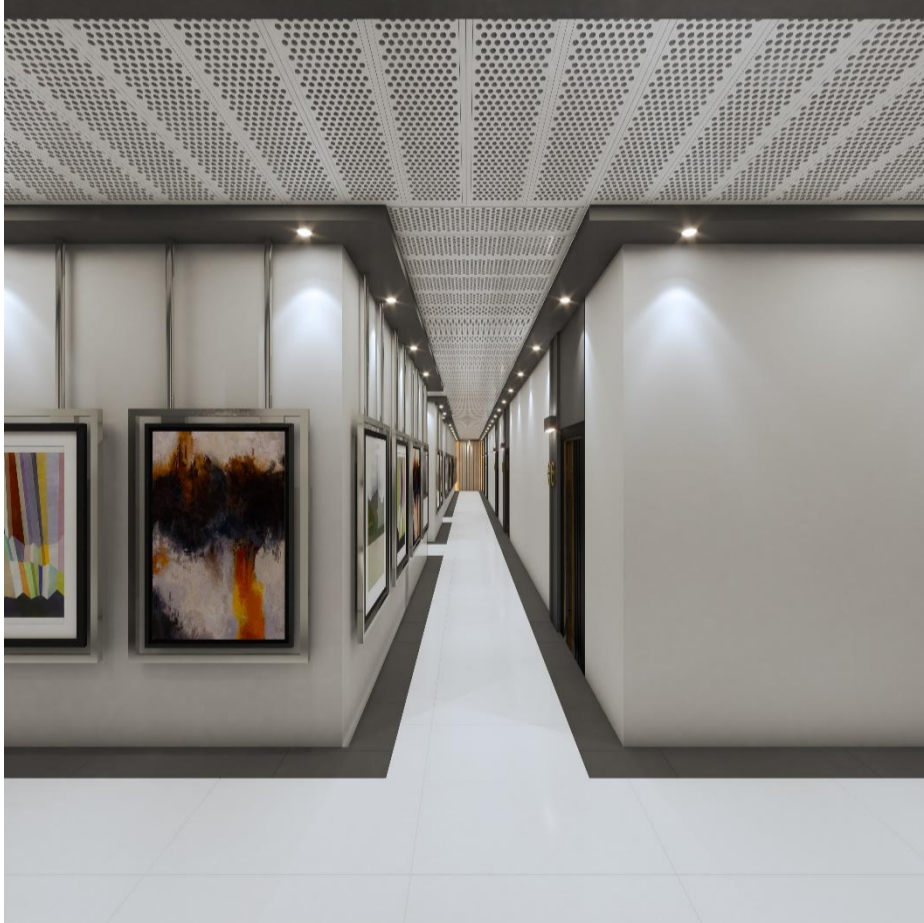
- GYM / FITNESS CENTER
- MASJID
- CANTEEN
- COMMON SMOKING / VAPING ROOM ON EACH FLOOR
- GARBAGE SHOOT DUCT ON EACH FLOOR

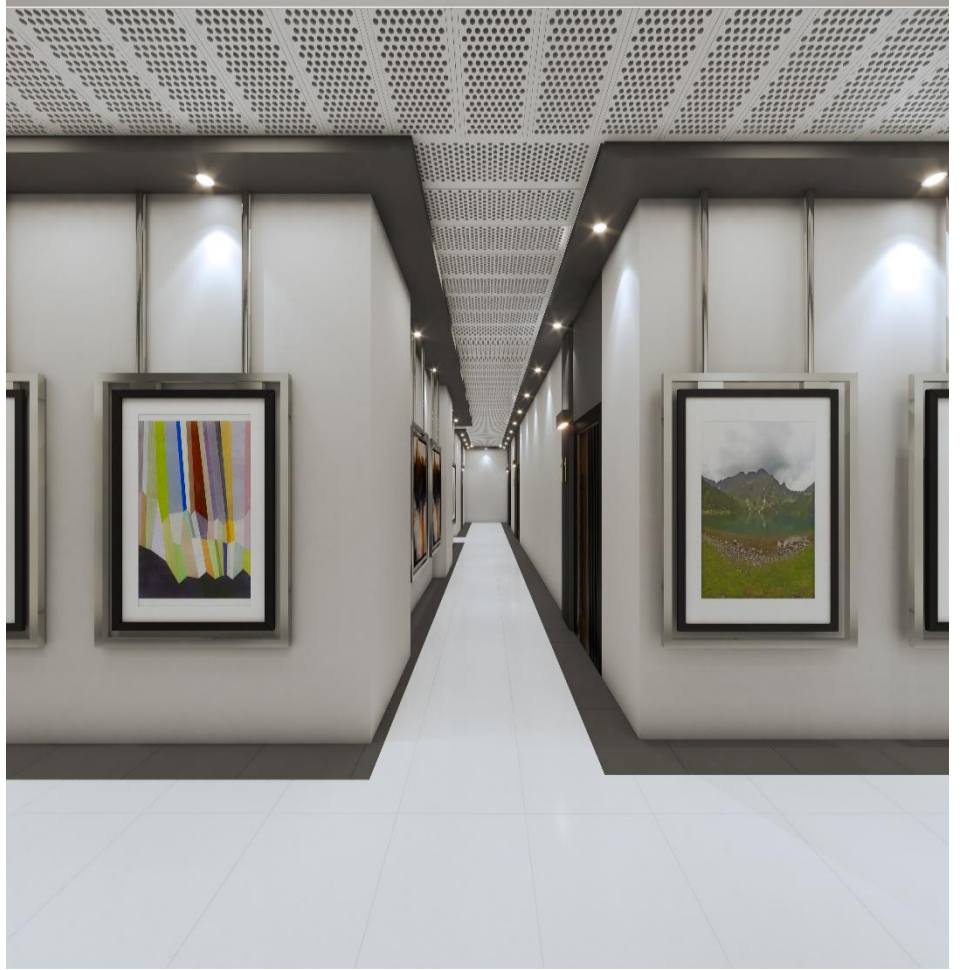
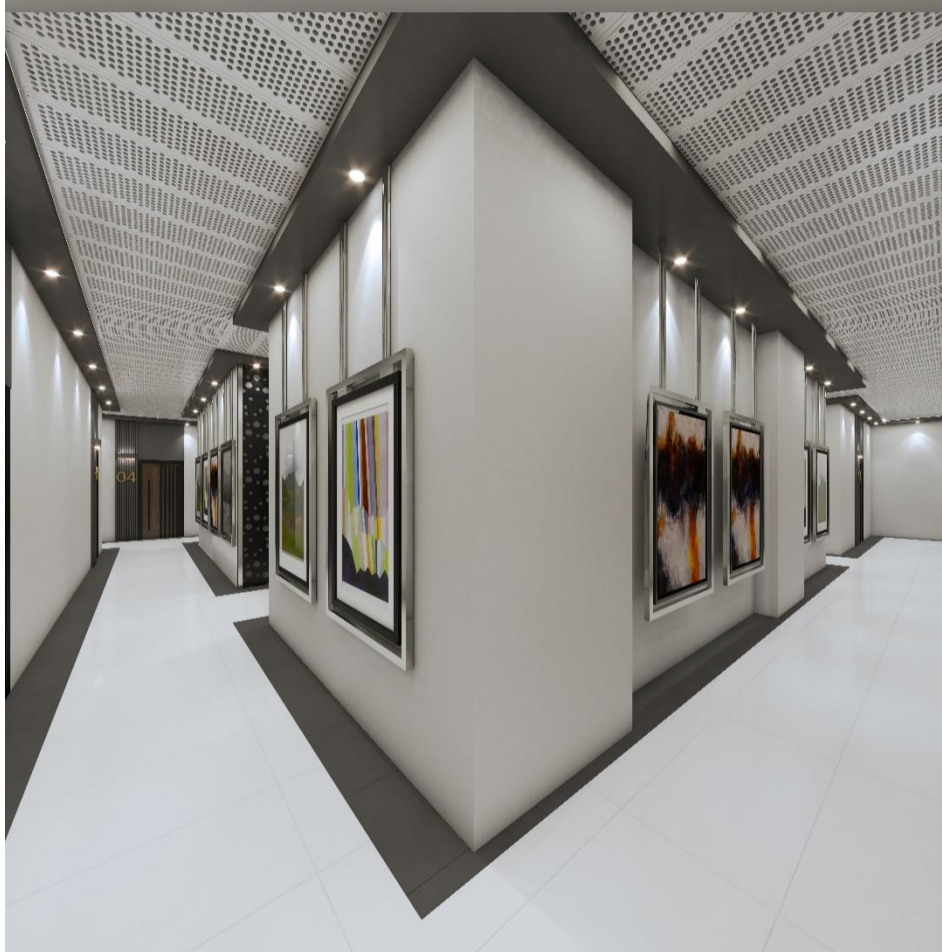
# Reception Area (3D)





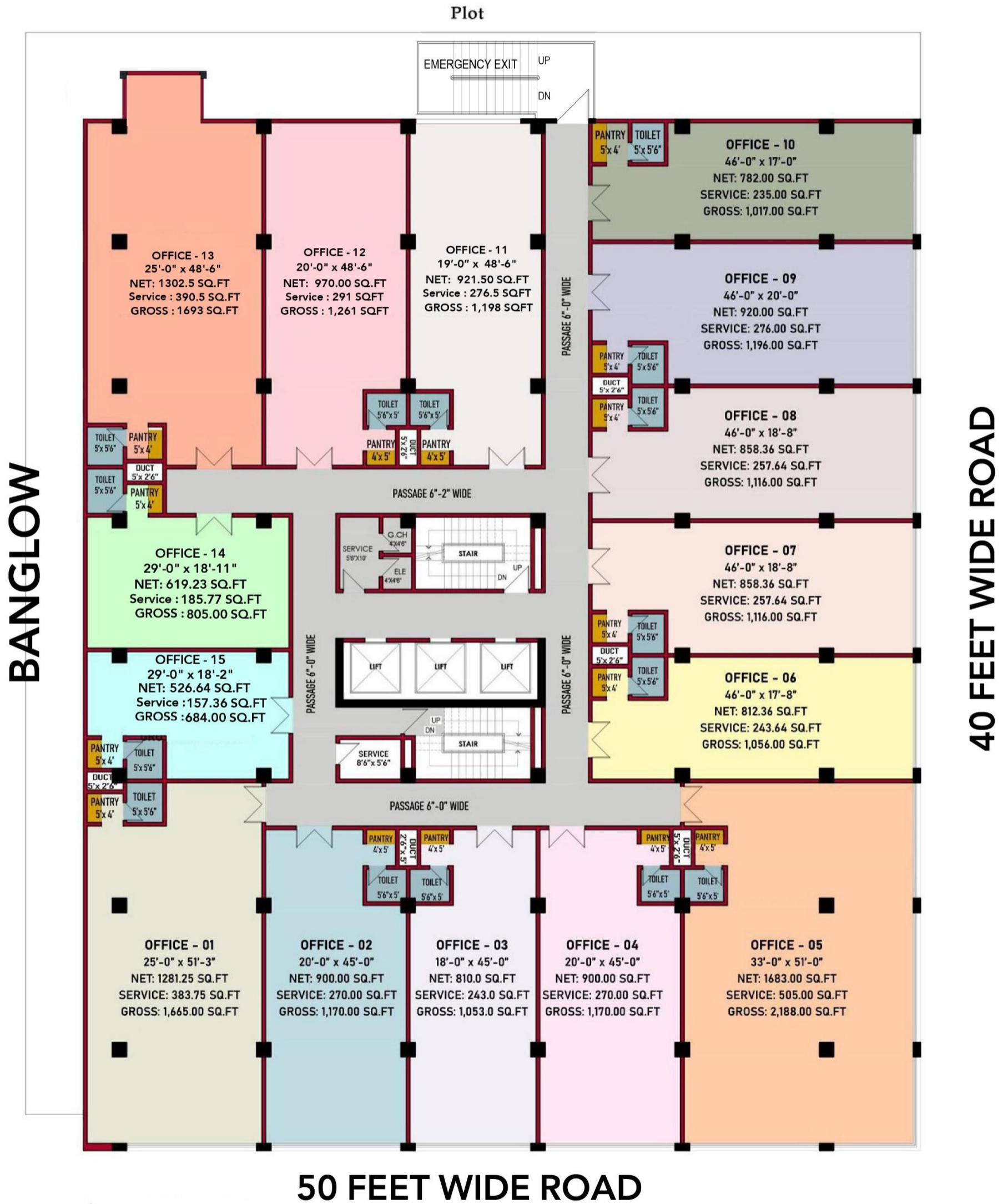
# CORRIDOR AREA (3D)



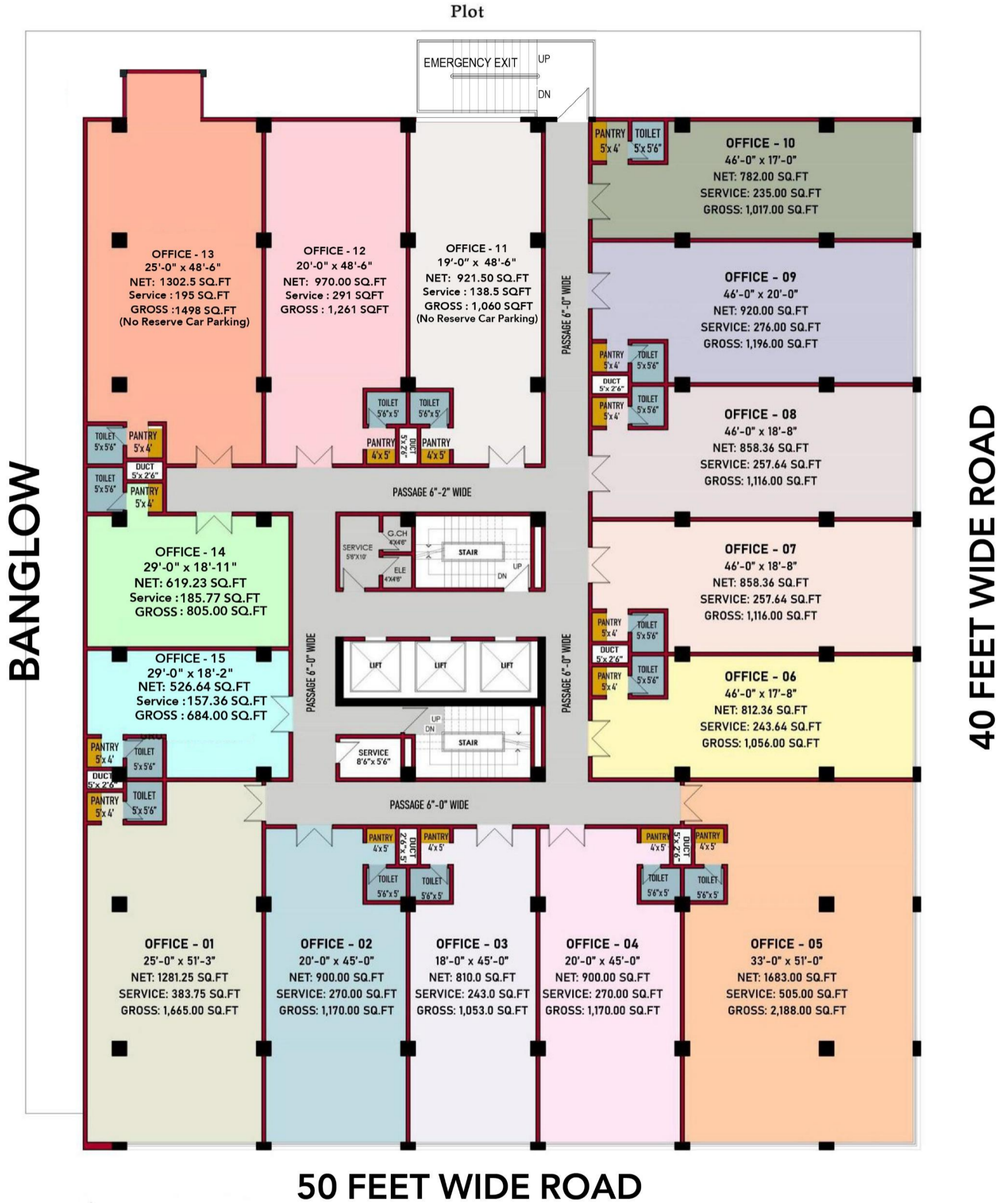


# OFFICE FULL FLOOR PLANNING

(1<sup>st</sup> to 4<sup>th</sup> Floor)



# OFFICES PLAN (5<sup>th</sup> Floor)









# OFFICES PRICE LIST & SCHEDULE

**Rs. 35,000 / Sqft**  
**on Gross Area**

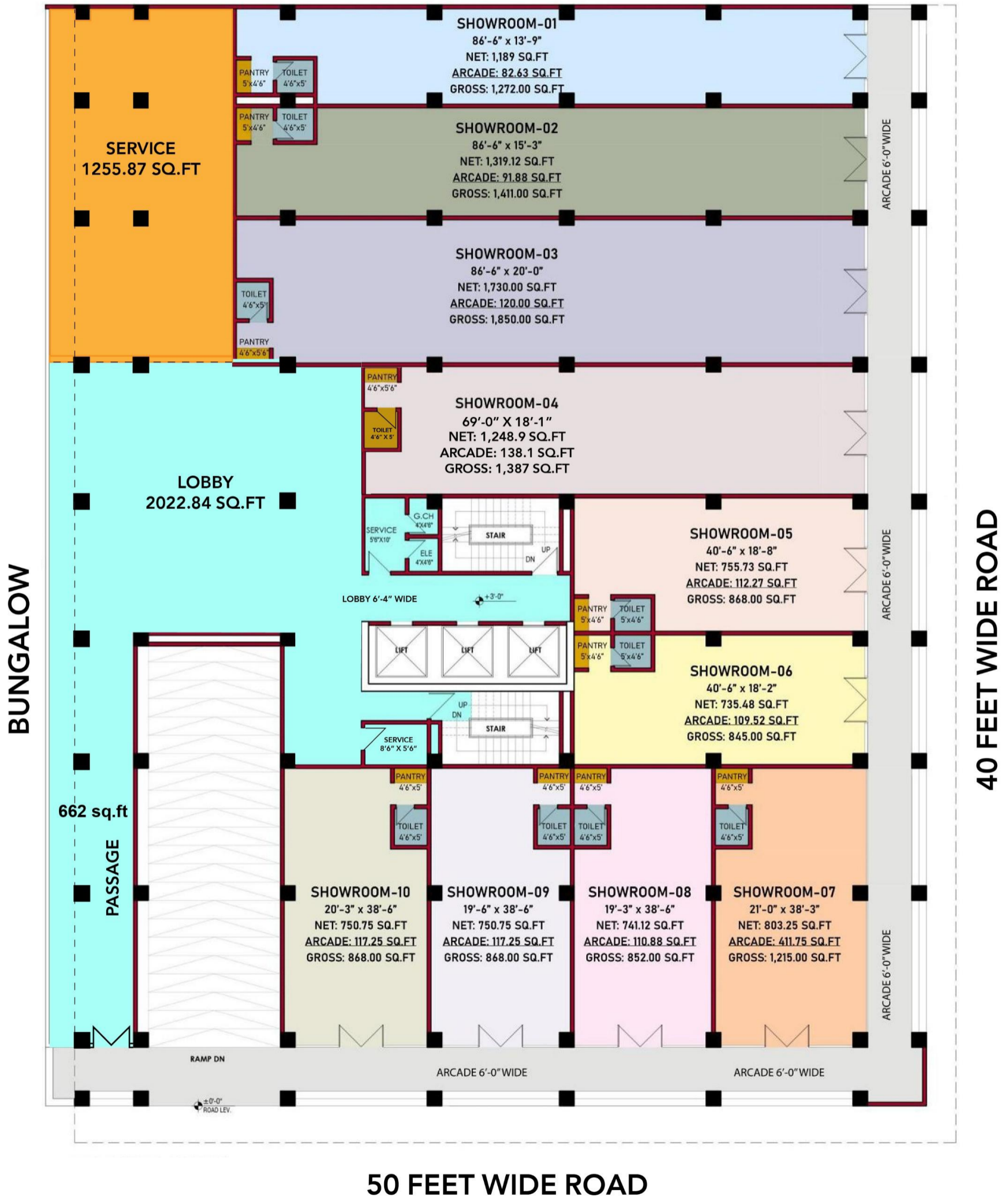
<u>Payment Schedule</u>	<u>OFFICES</u>
DOWN PAYMENT WITHIN 3 MONTH	50 %
4 MONTHLY INSTALLMENTS	5 % per month
ON WORK COMPLETE	30 %

Note: Total Estimated File Price is excluded from Stamp Duty, Advance Tax, E7 Tax, Any Tax (Required for Sub-Lease), Capital Value Tax, Capital Gain Tax, Registrar Fees, Lawyer Fees, Documentation Fees, Misc, Property Tax, Excise & Taxation, and All Utility Connections 1. Electric (Approval/Connection/Meter/P.M.T/Sub-Station/Grid Station/High & Low Tension Cables/Misc/All Material/Billing) Charges, 2. Gas (Connection/Meter/Main Line/Approval/Misc/All Material/Billing) Charges. 3. Water & Sewerage (Connection/Approval/Meter/Misc/All Material/R.O. Plant/Billing) are extra amount whatsoever decided by Company on later stages to be paid by the File Holder upon demand.



# SHOWROOMS ON GROUND FLOOR

PLOT





DOWNLOAD THE LATEST PDF FROM BY SCANNING THE BELOW Q R CODE FROM YOUR MOBILE



LAST UPDATED ON: Saturday, April 4, 2026

Disclaimer: All Picture, Plans, Layouts, Information, Data and Details included in this brochure are indicative only and may change at any time up to the final "as built" status in accordance with the final designs of the project and regulatory approvals and planning permission.